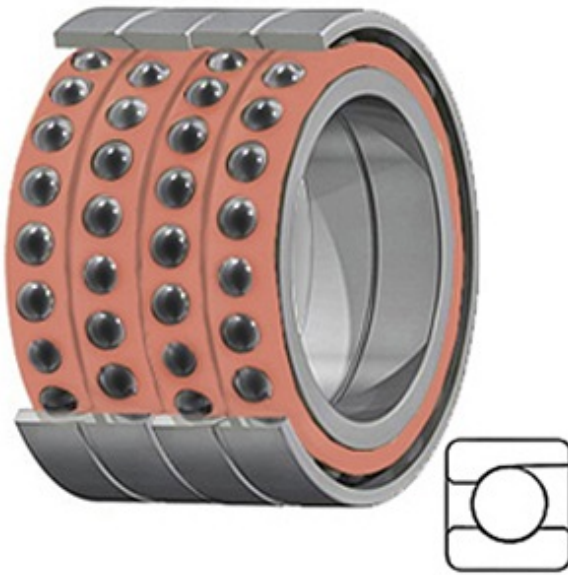




# TIMKEN BEARINGS INDUSTRY



0.472 Inch | 12 Millimeter x 0.945 Inch | 24 Millimeter x 0.945 Inch | 24 Millimeter TIMKEN 2MMC9301WI QUM Precision Ball Bearings

Bearing No. 2MMC9301WI QUM

2MMC9301WI QUM Bearing 2D drawings and 3D CAD models

Category	Precision Ball Bearings
Inventory	0.0
Manufacturer Name	TIMKEN
Minimum Buy Quantity	N/A
Weight	0.054
EAN	0087796340176
Product Group	B04270
Enclosure	Open
Precision Class	ABEC 7   ISO P4
Material - Ball	Ceramic
Number of Bearings	4 (1 Quadruplex Set)
Contact Angle	15 Degree
Preload	Medium
Raceway Style	1 Rib Outer Ring
Cage Material	Phenolic
Rolling Element	Ball Bearing
Mounting Arrangement	Quadruplex-Universal
Flush Ground	Yes
Inch - Metric	Metric
Other Features	Single Row   Angular Contact   Super High Precision   Hybrid   Corrosion Resistant Ball
Long Description	12MM Bore; 24MM Outside Diameter; 24MM Width; Open Enclosure;



## TIMKEN BEARINGS INDUSTRY

	ABEC 7   ISO P4 Precision; Ceramic Ball Material; 4 (1 Quadruplex Set) Bearings; 15 Degree Contact Angle; Phenolic Cage Material; 1 Rib Ou
Category	Precision Ball Bearings
UNSPSC	31171531
Harmonized Tariff Code	8482.10.50.28
Noun	Bearing
Keyword String	Angular Contact Ball
Manufacturer URL	<a href="http://www.timken.com">http://www.timken.com</a>
Manufacturer Item Number	2MMC9301WI QUM
Weight / LBS	0.12
d	0.472 Inch   12 Millimeter
D	0.945 Inch   24 Millimeter
B	0.945 Inch   24 Millimeter